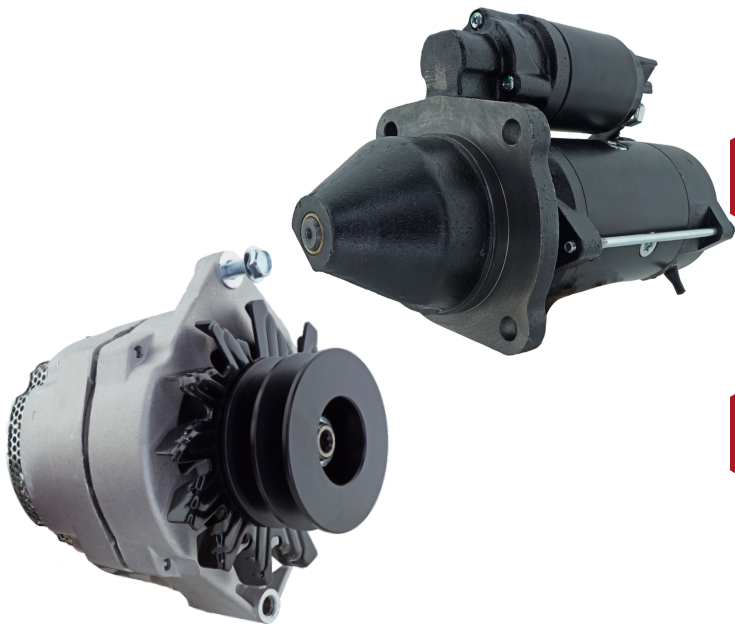




# AGRICULTURAL EQUIPMENT

*When you need parts to keep your machinery running, you need a product that's known for reliability, durability, and quality. At Keystone, we offer a number of high-quality parts for your agriculture and farming equipment needs.*



## QUALITY & EXCELLENCE

At Keystone, our products are thoroughly tested to ensure they are 100% installation-ready before they are delivered to our customers. We are dedicated to providing a high-quality product that exceeds expectations.



## DEPENDABILITY

Our products are endurance tested and reviewed for OE fit, form, and function to guarantee reliability and easy installation.



## COMPATIBILITY

Our products are compatible with a range of vehicles and equipment including AGCO, Case IH, Caterpillar, John Deere, Kubota, Massey Ferguson, New Holland, and more.



## OE REPLACEMENTS

Replacement units for OE competitors like Bosch, Denso, Delco Remy, Leece Neville, Lucas and more.

**24 MONTH WARRANTY**

Visit our website  
for more information  
about our products



(416) 241 4488  
sales@keystonealternators.com  
keystonealternators.com  
101 Simona Drive, Bolton, Ontario, L7E 4E8



# AGRICULTURAL EQUIPMENT

## ALTERNATORS

KEYSTONE #	DESCRIPTION	APPLICATION	MODEL YEARS
811-21132	12V 150A NEG IR/EF 22SI DR W/ DEBRIS SHIELD	NEW HOLLAND, VARIOUS	1988-2007
811-10113	12V 72A NEG IR/EF 10SI/116 DR	ALLIS-CHALMERS, CASE/CASE-IH, FORD, INTERNATIONAL HARVESTER, JOHN DEERE	1961-2007
811-10114	12V 100A NEG IR/EF 10SI/116 DR	ALLIS-CHALMERS, CASE/CASE-IH, JOHN DEERE, MASSEY FERGUSON	1961-2007
811-10101	12V 63A NEG IR/EF 10SI/100 DR	ALLIS-CHALMERS, CASE/CASE-IH, JOHN DEERE, MASSEY FERGUSON	1964-2007
811-15101	12V 105A NEG IR/EF 15SI/116 DR	AGCO, ALLIS-CHALMERS, CASE/CASE-IH, DEUTZ-ALLIS, FORD, INTERNAT	1978-2007
811-21102	12V 150A NEG IR/EF 22SI DR	WILLMAR	2000-2007
823-06116	12V 60A NEG IR/IF ND	AGCO, KUBOTA	2000-2008
843-05102	12V 50A IR/IF MI	FORD, MONTANA, NEW HOLLAND	1996-2013
861-84110	12V 95A NEG IR/EF K1 BO	APACHE, CASE/CASE-IH, CATERPILLAR, HESSTON, JCB, JOHN DEERE	1984-2014
861-84114	12V 120A NEG IR/EF K1 BO	APACHE, CASE/CASE IH, JOHN DEERE, WILLMAR	1996-2016
863-54108	12V 200A NEG IR/IF NCB2 BO	JOHN DEERE	2003-2019
863-54114	12V 150A NEG IR/IF NCB2 BO	JOHN DEERE	2007-2012

## STARTERS

KEYSTONE #	DESCRIPTION	APPLICATION	MODEL YEARS
911-27105	12V 2.5kW 10T CW DD 20/27MT DR	ALLIS-CHALMERS, MASSEY FERGUSON	1958-1986
911-42111	12V INS 11T CW DD 42MT DR	AGCO, BUHLER, CASE/CASE-IH, CATERPILLAR, FORD, INTERNATIONAL HARV	1984-2007
911-42112	12V INS 12T CW DD 42MT DR	AGCO, ALLIS-CHALMERS, CASE/CASEIH, CATERPILLAR, INTERNATIONAL HARVESTER	1966-2007
911-42215	24V INS 12T CW DD 42MT DR	CASE/CASE-IH	1969-1972
912-28116	12V 2.8kW 10T CW OSGR 28MT DR	APACHE, CHEROKEE, MILLER APPLICATOR, NEW HOLLAND, WHITE, WILLMAR	1989-2006
912-28117	12V 2.8kW 10T CW OSGR 28MT DR	MACDON INDUSTRIES	1993-1997
913-35121	12V 10T CW DD 35MT/INT DR	CASE/CASEIH, COCKSHUTT, JOHN DEERE, MASSEY FERGUSON, OLIVER, VERSATILE	1961-1992
913-72101	12V INS 7.2kW 11T CW PLGR OCP 39MT	BUHLER, CASE/CASE-IH, CATERPILLAR, FORD, INTERNATIONAL HARVESTER	1984-2016
922-27115	12V 2.7kW 13T CW OSGR ND	APACHE, CASE/IH, CATERPILLAR, HESSTON, MACDON, MASSEY FERGUSON, MILLER APPLICATOR, NEW HOLLAND, TRACKLESS, VERSATILE, WILLMAR	1984-2010
943-30101	12V 3.0kW 9T CW PLGR MI	KUBOTA	2006-2017
953-25151	12V 2.5kW 10T CW VA	JOHN DEERE	1992-2008
973-32112	12V 3.2kW 10T CW PLGR AZE IK	MASSEY FERGUSON, MELROE, SPRA-COUPÉ	1988-2010
981-28131	12V 2.8kW 10T CW DD M50 LU	CASE/CASEIH, DAVID BROWN, FORD, FORDSON, INTERNATIONAL HARVESTER	1965-1999



### CONTACT INFORMATION

Keystone Alternators & Starters  
 101 Simona Drive  
 Bolton, Ontario  
 L7E 4E8  
 Tel: (416) 241 4488  
 E-mail: sales@keystonealternators.com  
 Website: keystonealternators.com

We're committed to delivering the  
 highest possible quality standard